



PRODUCT DATA SHEET

HYDRA AIR PTFE

humidification membrane – 2m roll

PAHYMB0002

Applications:

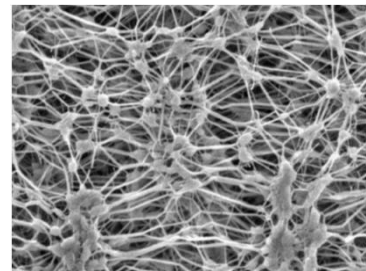
Humidification, document repair, adhesive removal

Technical characteristics:

- Laminated ePTFE membrane on 100% Polyester non-woven
- Length: 200 cm
- Width: 130 cm
- Pore size of membrane: approx. 2 μ
- Air flow: 0.4 CFM (Ft³/min.)
- Chemical resistance: very good (related to behaviour of polyester)
- Washable: cold hand wash or soft cycle, no tumble dry. The membrane itself won't wear but the non-woven polyester will eventually get "fluffy".



Non woven and membrane sides



MEB view of ePTFE

Product code	Size cm	Pack qty
PAHYMB0002	130 x 200	1 roll

For further information on this or other products please contact;

Lesley Jones
info@cxdltd.com

Telephone:
+44 (0) 1234 846333

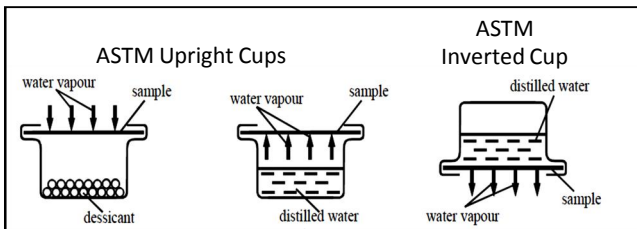
Website:
www.cxdltd.com



PRODUCT DATA SHEET

Breathability test (Water Vapour Transmission: **Cup test methods** ASTM E96 : 2010 A, B, BW, C, D and E)

	<u>Upright</u>	<u>Inverted</u>
•Gore-tex	991	14470
•Hydra PTFE	1075	12344



Restoration Laminates – Chemical Challenge

Test method: samples were cut into 5cm squares and laid onto absorbent paper wipes. 0.5ml of solvent were dropped onto the centre of the sample and left for 2 minutes.

The samples were lifted to check wetting of the paper wipe.

Solvent	Wettability on nonwoven surface	Transfer through laminate	Laminate after drying
Acetone	Good	Yes	Soft , no curl, no peel
5% Acetic acid	Slow	Yes	Soft , no curl, no peel
Isopropyl alcohol (IPA)	Good	Yes	Slight curl, stiff, no peel
Toluene	Very good	Yes, fast	Soft, no curl, no peel

For further information on this or other products please contact;

Lesley Jones
info@cxdltd.com

Telephone:
+44 (0) 1234 846333

Website:
www.cxdltd.com